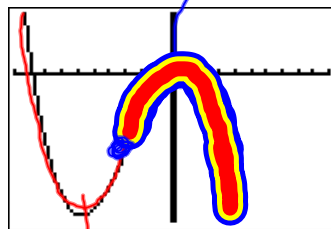


19 (3.2) $y = -x^3 - 8x^2 + 8x + 5$

increasing
 $[-5.79, 460]$

decreasing
 $(-\infty, -5.79]$
 $\cup [460, \infty)$
 constant
 none



C. UP
 C. DN

-5.79

460

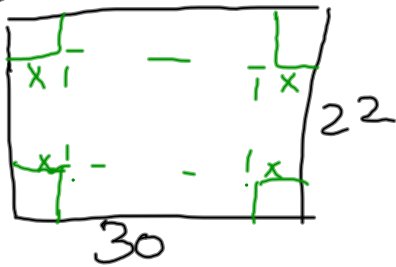
degree of polynomial
 $= n$

max number of roots: n

max number of turning pts: $n-1$

max number of inflection pts: $n-2$

29)



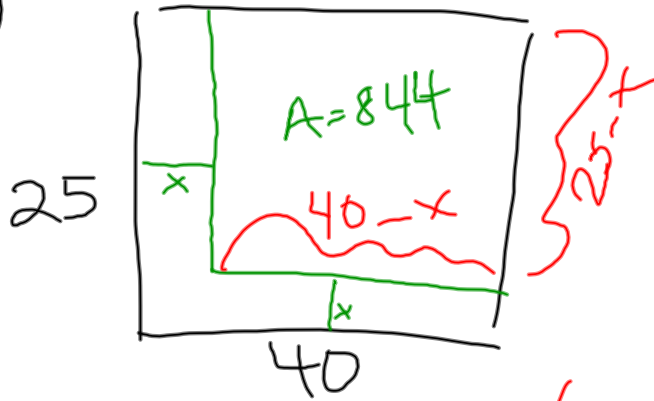
$$V = (22 - 2x)(30 - 2x)(x) = 1000$$

$$2.234x (22 - 2(2.234)) (30 - 2(2.234))$$

$$6.470x (22 - 2(2.234)) (30 - 2(2.234))$$

$$17.296$$

8)



$$A = (25-x)(40-x) = 844$$

Precalculus 2011-02-14